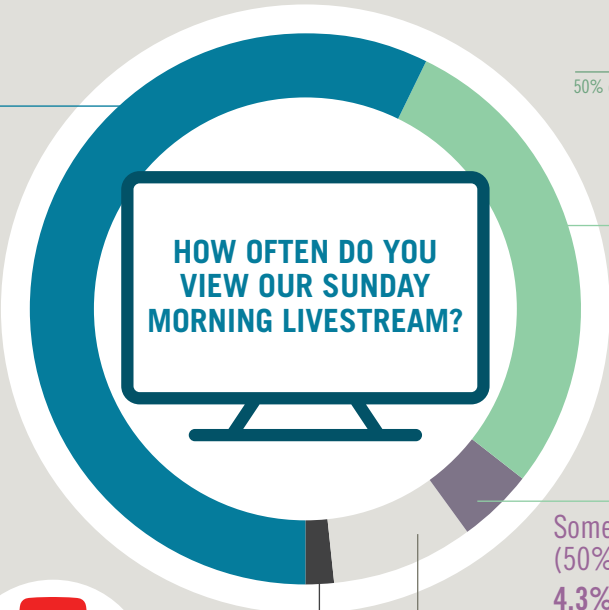


20/20 VISION SURVEY

RESULTS FROM 141 RESPONSES

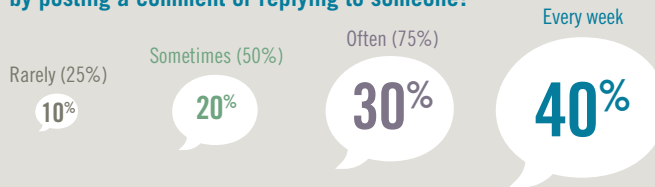
Always
57.4%



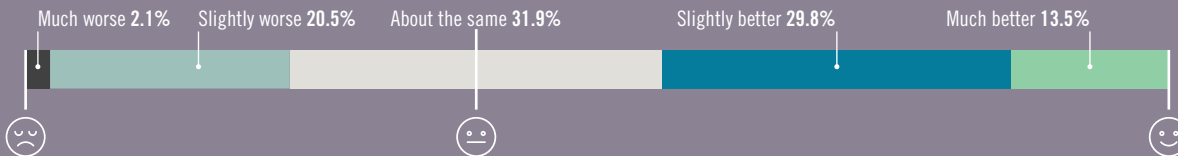
YouTube Subscribers
72.3%

Facebook Followers
63.8%

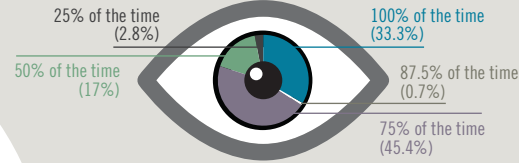
How often do you engage in the conversation by posting a comment or replying to someone?



HOW WOULD YOU SAY YOUR SPIRITUAL LIFE HAS FARED DURING COVID-19?

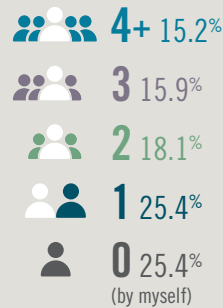


When you watch, what percent of the time are your eyes on the screen?



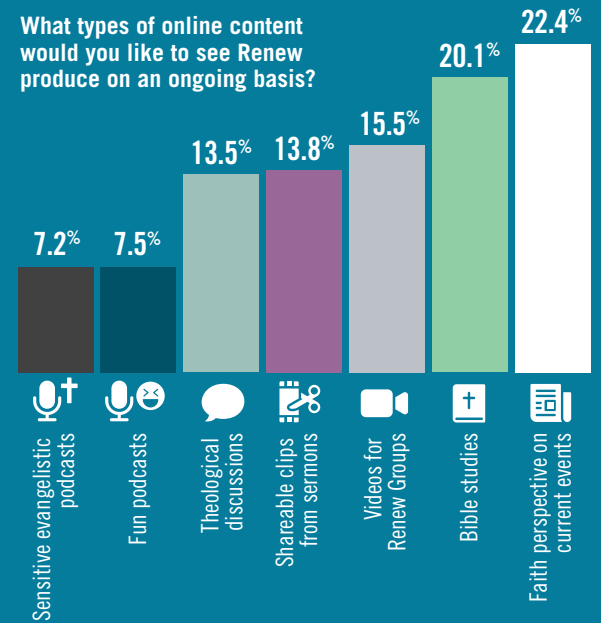
Most of the time (75%)
28.4%

How many people do you typically watch the Sunday morning livestream with?



LOOKING AHEAD

What types of online content would you like to see Renew produce on an ongoing basis?



If you had to choose between attending Sunday services in person or watching a livestream on an ongoing basis, which would you prefer?



Mix of livestream + in person: 2.8%

How comfortable would you be with in-person services that require physical distancing, masks and maybe no singing?



How would you feel if we held services at cheaper locations on Sunday afternoon/evening after reopening?

